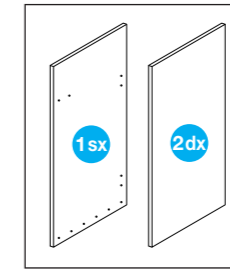


SOTTOLAVELLO 120 KIT

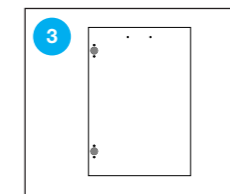
SINK BASE120 KIT



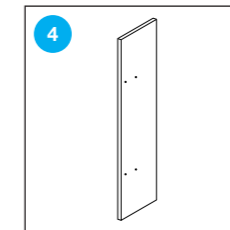
2 fianchi Dx-Sx
2 right-left sides



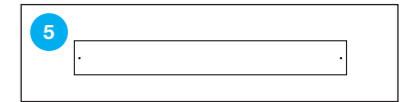
3 ante / 3 doors



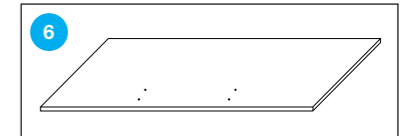
tramezzo verticale
vertical partition



fascia frontale
front base



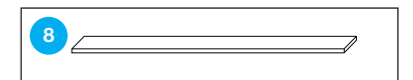
base orizzontale
horizontal base



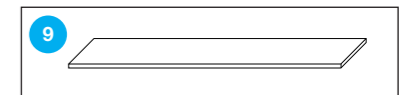
tramezzo orizzontale posteriore superiore
upper rear horizontal partition



tramezzo orizzontale anteriore
front horizontal partition



tramezzo orizzontale posteriore inferiore
lower rear horizontal partition



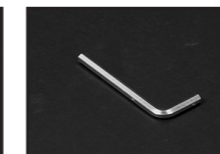
FERRAMENTA / HARDWARE



A 20 X
SPINE IN LEGNO 8X35
WOODEN DOWEL 8x35



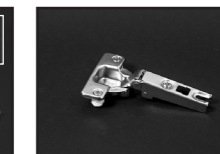
B 10 X
VITI MONTAGGIO 7X50
TESTA ESAGONALE
7X50 HEX HEAD
MOUNTING SCREWS



C 1 X
CHIAVINO ESAGONALE
MM. 4 ZINC.
HEX KEY MM. 4
GALVANIZED



D 3 X
MANIGLIA CON VITI
HANDLE WITH SCREWS



E 6 X
CERNIERA D.35 COLLO
DRITTO
HINGE D.35 STRAIGHT
NECK



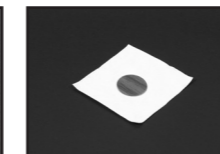
F 6 X
BASETTA A PRESSIONE
PER CERNIERA
PRESSURE BASE
FOR HINGE



G 5 X
PIEDINO IN PLASTICA
PLASTIC FOOT



H 20 X
VITI ECL PZD TPS FT
3,5X20 ZINC.
SCREWS ECL PZD TPS
FT 3,5X20 GALVANIZED



I 6 X
COPRIFORO
AUTOADESIVO DI 13 MM
HOLE COVER
13 MM SELF-ADHESIVE



L 1 X
TUBETTO COLLA GR. 15
TUBE OF GLUE GR. 15



Istruzioni di montaggio Sottolavello 120.

- A)** Per evitare graffiature, si consiglia di eseguire il montaggio della scarpiera su una base orizzontale coperta.
B) È consigliato di eseguire il montaggio da 2 persone.

Assembly instructions Sink Base 120.

- A)** To avoid scratches, mounting is recommended of the shoe cabinet on a covered horizontal base.
B) It is recommended to carry out the assembly by 2 people.



